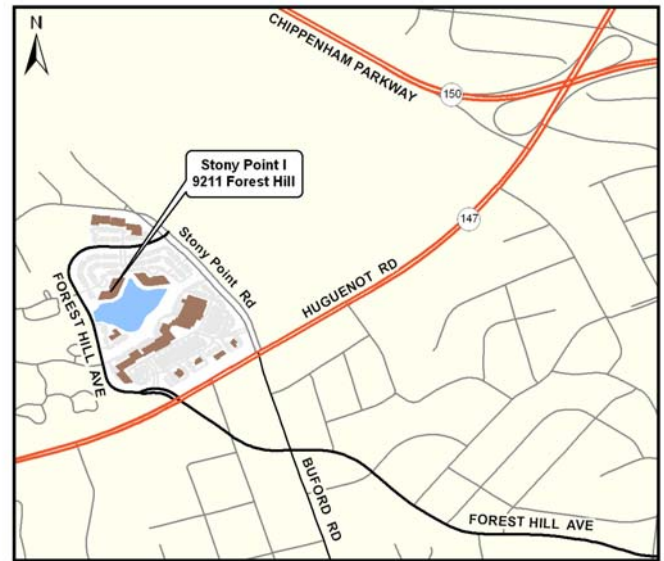


# Directions to the Richmond Regional Planning District Commission

9211 Forest Hill Avenue  
Suite 200  
Richmond, VA 23235

Phone 804-323-2033  
Fax 804-323-2025

[www.richmondregional.org](http://www.richmondregional.org)



## FROM:

The North— (1 toll)



Take I-95 south to exit 79 (I-195/I-64 west); stay in the left lane for exit to I-195. Remain on I-195 south to Powhite Parkway south (VA 76). After the tollbooth, (**do not use the express toll lanes\***) take the exit to Chippenham Parkway north (VA 150). Exit off of Chippenham Parkway to Huguenot Road (VA 147) and make a left at the traffic light onto Huguenot Road. At the third traffic light on Huguenot, turn right onto Forest Hill Avenue. You will see a lake on the right; turn into the parking lot and continue to the first building on the right (9211 Forest Hill Avenue).

## The South—

Take I-95 north to exit 67 (Chippenham Parkway/VA 150). Go north on Chippenham Parkway to the Huguenot Road exit (VA 147) and turn left at the traffic light onto Huguenot Road. At the third traffic light on Huguenot, turn right onto Forest Hill Avenue. You will see a lake on the right; turn into the parking lot and continue to the first building on the right (9211 Forest Hill Avenue).

## The West— (1 toll)

Take I-64 east to exit 186 (I-195 south) to Powhite Parkway south (VA 76). After the tollbooth, (**do not use the express toll lanes\***) take the exit to Chippenham Parkway north (VA 150). Exit off of Chippenham Parkway to Huguenot Road (VA 147) and turn left at the traffic light on Huguenot Road. At the third traffic light on Huguenot, turn right onto Forest Hill Avenue. You will see a lake on the right; turn into the parking lot and continue to the first building on the right (9211 Forest Hill Avenue).

## The East— (2 tolls)

Take I-64 west and exit onto I-95 south. Take exit 74A (Downtown Expressway/VA 195). After the tollbooth, take Powhite Parkway south (VA 76). After the next tollbooth, (**do not use the express toll lanes\***) take the exit to Chippenham Parkway north (VA 150). Exit off of Chippenham Parkway to Huguenot Road (VA 147) and turn left at the traffic light on Huguenot Road. At the third traffic light on Huguenot, turn right onto Forest Hill Avenue. You will see a lake on the right; turn into the parking lot and continue to the first building on the right (9211 Forest Hill Avenue).

## Route 60—

Take Midlothian Turnpike (Route 60) to the intersection of Huguenot Road and Midlothian Turnpike and turn north onto Huguenot Road. Proceed approximately 4 miles and turn left on Forest Hill Avenue. You will see a lake on the right; turn into the parking lot and continue to the first building on the right (9211 Forest Hill Avenue).

## Route 6—

Take Patterson Avenue to the intersection of Patterson Avenue and Parham Road. Turn South on Parham Road. Parham Road becomes Chippenham Parkway before crossing the James River. Continue on Chippenham Parkway to the Huguenot Road exit; turn right at the traffic light onto Huguenot Road. At the second traffic light on Huguenot, turn right onto Forest Hill Avenue. You will see a lake on the right; turn into the parking lot and continue to the first building on the right (9211 Forest Hill Avenue).

\* **If you use the express lanes at the tollbooth** you will not be able to take the Chippenham Parkway exit. Take the Jahnke Road 686 West exit instead. This will bring you to Buford Road. At that light take a right. At the next light turn left onto Forest Hill Ave. After you cross Huguenot Road you will see a lake on the right; turn into the parking lot and continue to the first building on the right (9211 Forest Hill Avenue).