

Office of Intermodal Planning and Investment

Economic Competitiveness Through Corridor and Multimodal Transportation Planning in Virginia

3rd Annual Richmond Region Transportation Forum

March 3, 2016

J. Kelli Nash

Multimodal Planning and Policy Specialist



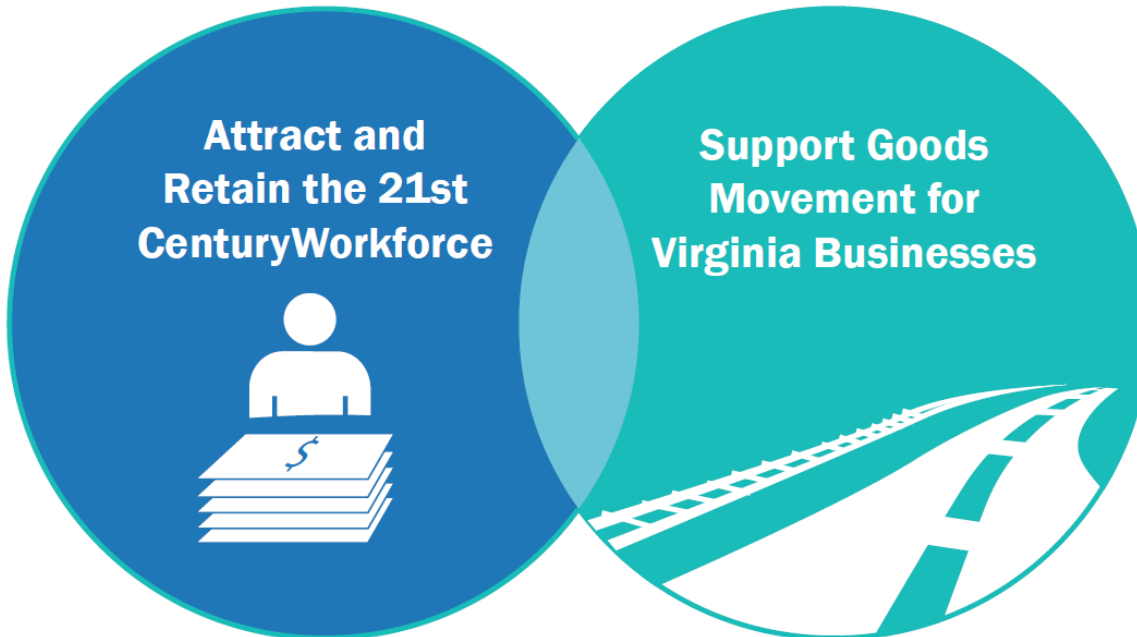
Who we are:

- Office of the Secretary of Transportation
 - Director of OIPI – Nick Donohue
 - Staff - J. Kelli Nash, Multimodal Planning and Policy Specialist
- Created in 2002 to encourage the coordination of multimodal and intermodal planning across the various transportation modes within the Commonwealth
- 13 Legislated duties in §2.2-229 such as:
 - Statewide Transportation Plan
 - Inter-agency coordination
 - Helping regional transportation agencies with multimodal and intermodal passenger and freight planning
 - Promote inclusion of non-motorized modes into planning
 - Address mobility and accessibility across CoSS, Regional Networks, and promote commuter choice

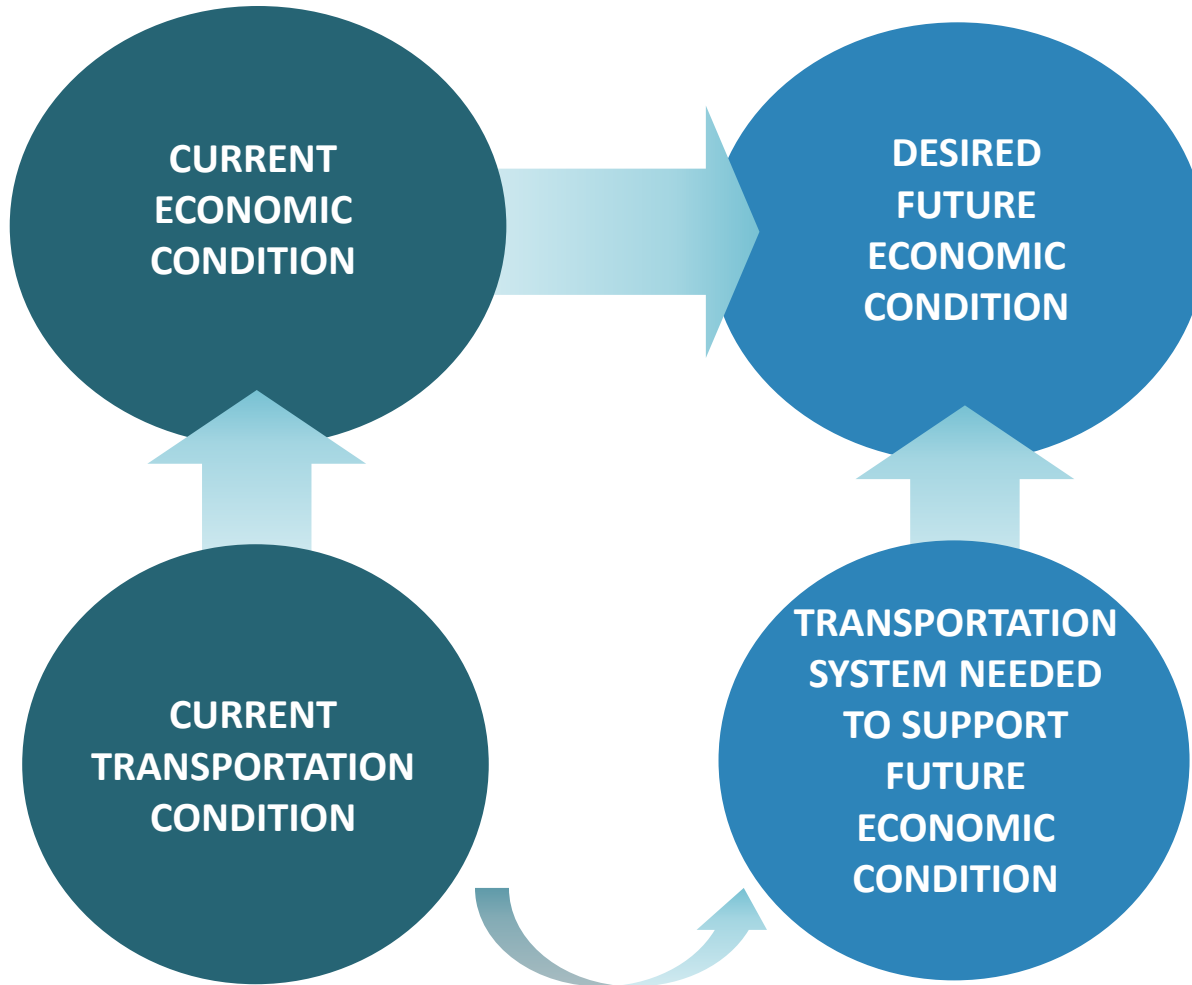


“Demographic and market studies consistently show that workers in the 21st century economy prefer walkable communities that are served by rail and public transit, as well as roads. If we want to cultivate this work force, which we need to do, we need to get ahead of these trends.”

Governor McAuliffe
June 18, 2014



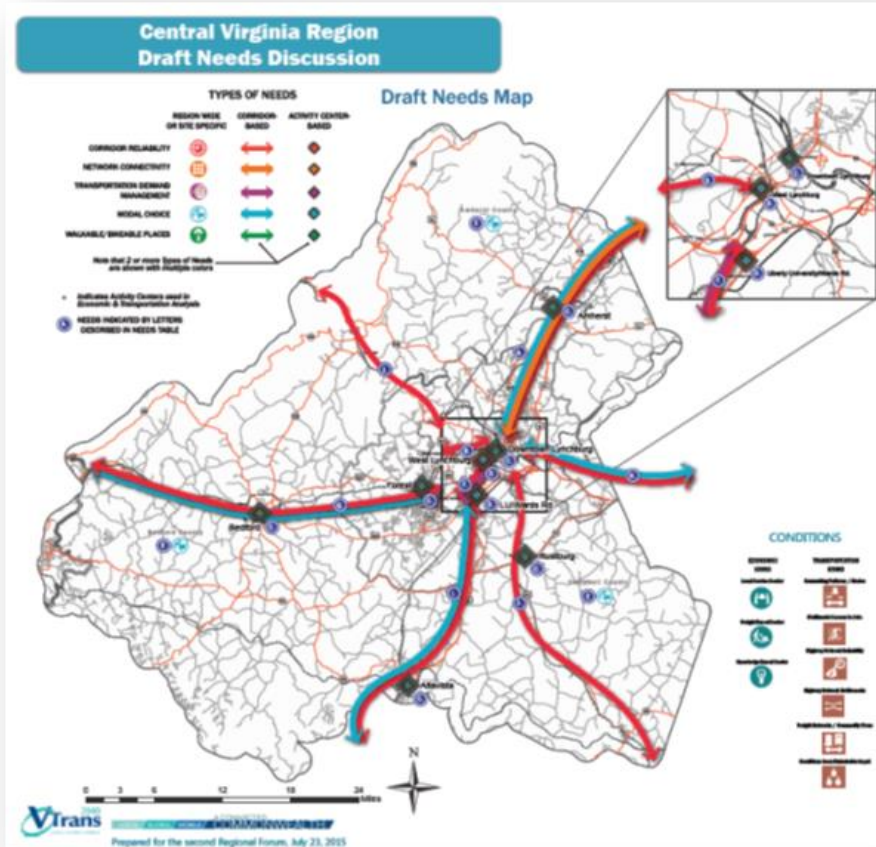
VTrans Regional Network Needs Assessments - Planning Process



“GAP” = Transportation “NEED”



VTrans Regional Network Needs Assessments - Planning Process



Region 2000 and Regional Connectivity -
A Pilot Study of Economic Opportunity for the Future



Region 2000 and Regional Connectivity - A Pilot Study of Economic Opportunity for the Future

□ What is it?

- A state & regional collaboration to study the **economic impacts of regional transportation connectivity** in the central Virginia region.



Region 2000 and Regional Connectivity - A Pilot Study of Economic Opportunity for the Future

❑ What is it?

- A state & regional collaboration to study the **economic impacts of regional transportation connectivity** in the central Virginia region.

❑ Approach:

1. How does the future look for traded industries that serve outside markets and drive the regional economy?
2. How does transportation, workforce, and information infrastructure support the regional economy?
3. What are constraints & potential improvements?
4. Quantify the economic impacts of proposed improvements
5. Develop recommendations

UDA Planning as Economic Development Tool

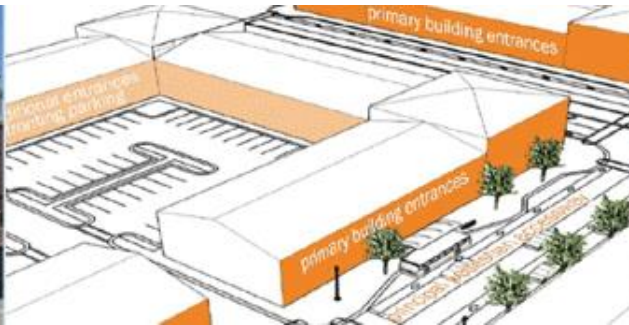
Create a Great
place

People Will Come

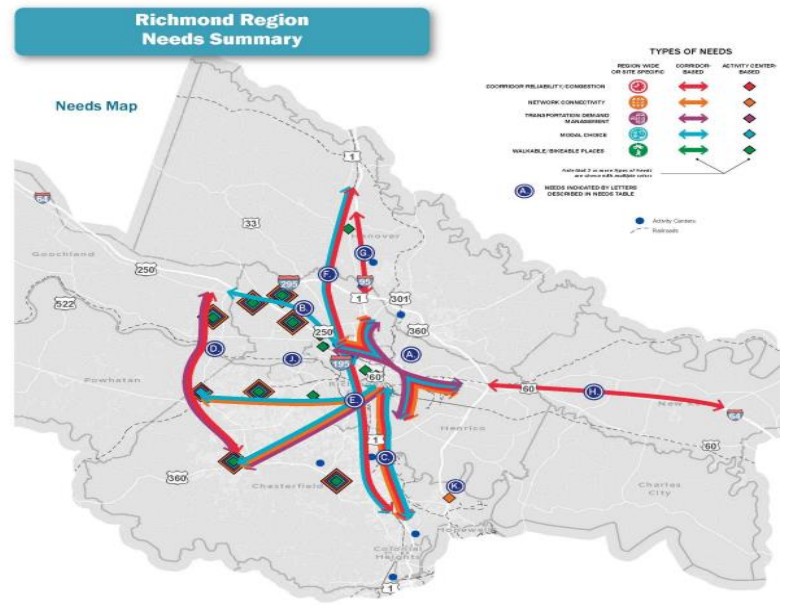
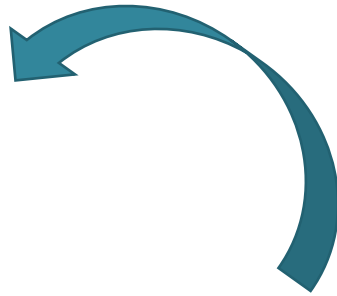
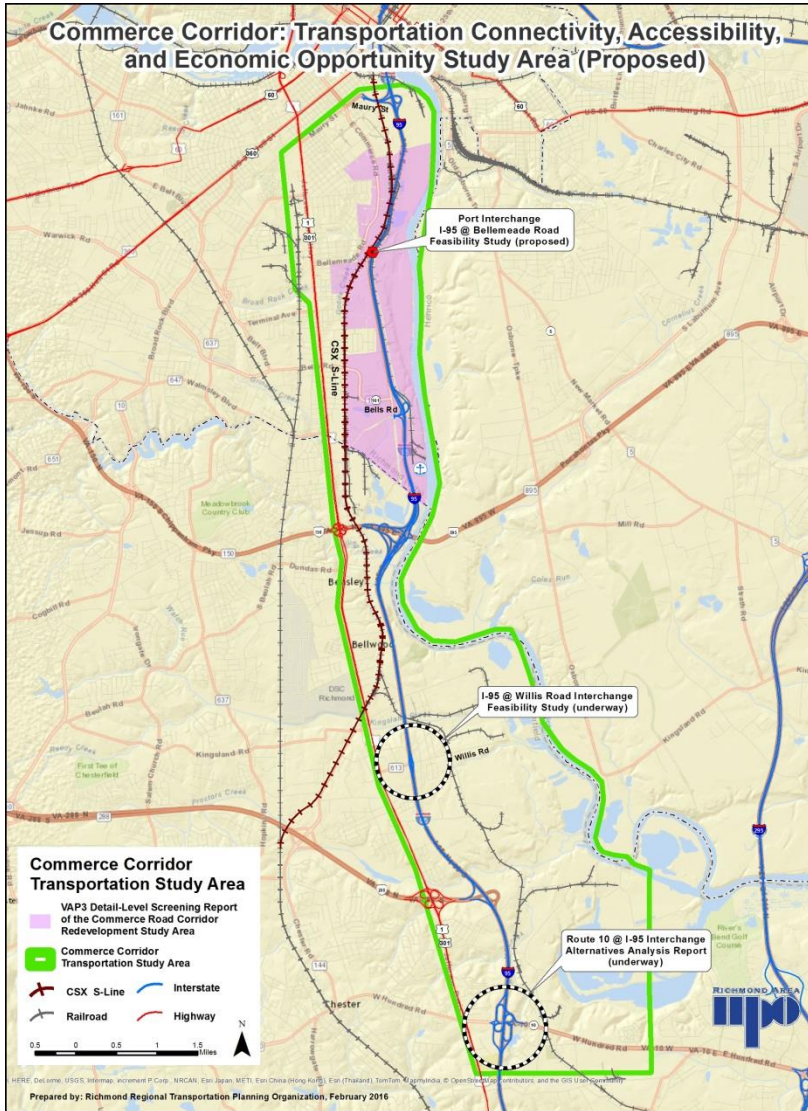
Jobs Will Follow

Community
Thrives

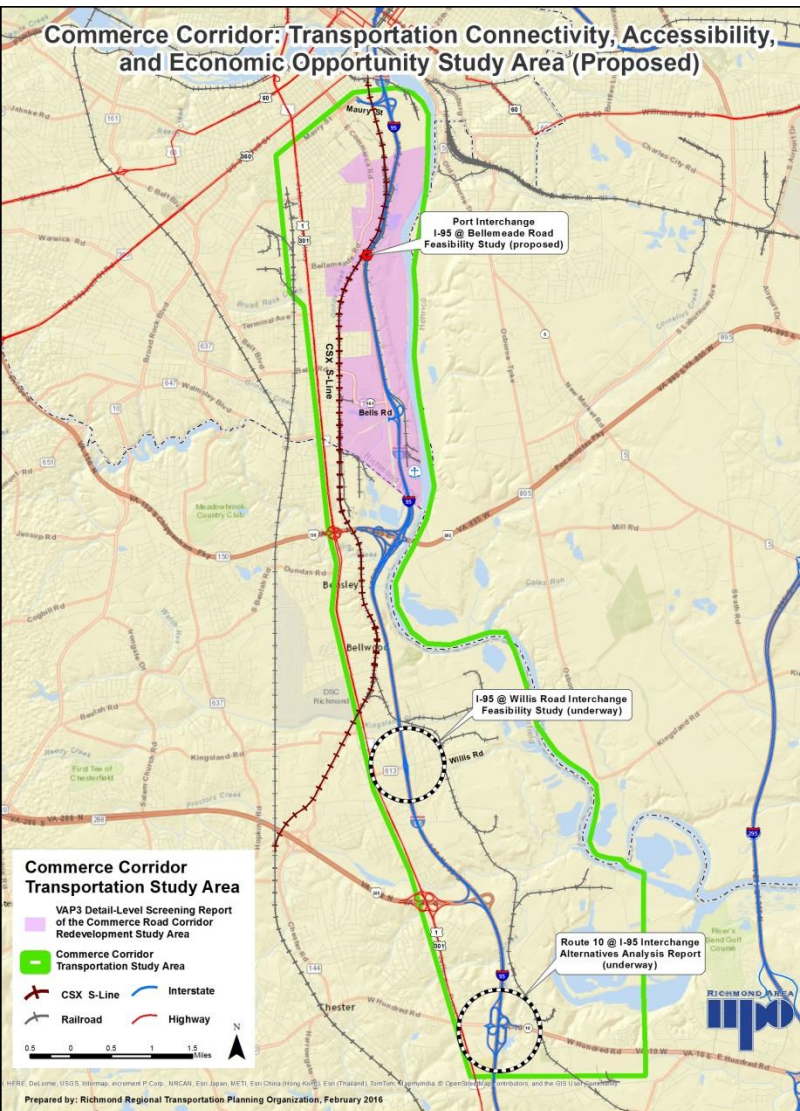
- Statewide Grants to help communities develop c in denser, TND consistent manner = multimodal options , more cost effective transportation improvements
- Creates livable, walkable, places that attract and retain workforce - old and young!
- Go to www.vtrans.org and click on research



Commerce Corridor: Transportation Connectivity, Accessibility, and Economic Opportunity Study



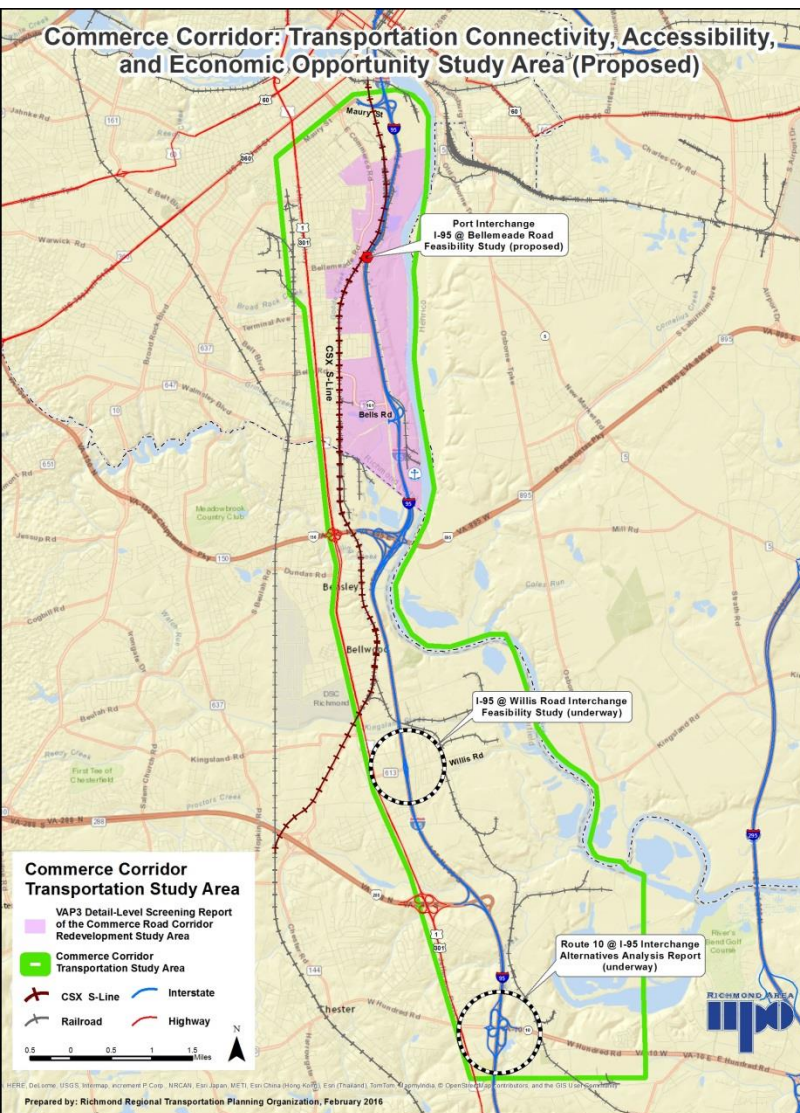
Commerce Corridor: Transportation Connectivity, Accessibility, and Economic Opportunity Study



- Dovetails with P3 effort
- Examine larger scale transportation impacts to competitiveness for this area



Commerce Corridor: Transportation Connectivity, Accessibility, and Economic Opportunity Study



□ Approach:

- Evaluate existing conditions of transportation assets
- Identify deficiencies and future needs
- Develop short-, medium- and long-term solutions to address operational, safety, accessibility and capacity challenges that discourage investment and development in the area



Commerce Corridor: Transportation Connectivity, Accessibility, and Economic Opportunity Study

- Also a Collaborative effort:
 - Chesterfield County,
 - City of Richmond
 - DRPT
 - OIPI/Secretary's Office
 - POV
 - P3
 - RRPDC/RRTPO
 - VDOT Central Office
 - VDOT Richmond Office
- Final Outcome:
 - Vision for the Corridor
 - Array of short, medium, and long term multimodal solutions to support POV, and economic and employment activities in the region

