



EQUITY PLANNING

And Programming at the RRTPO

CONSIDERING EQUITY

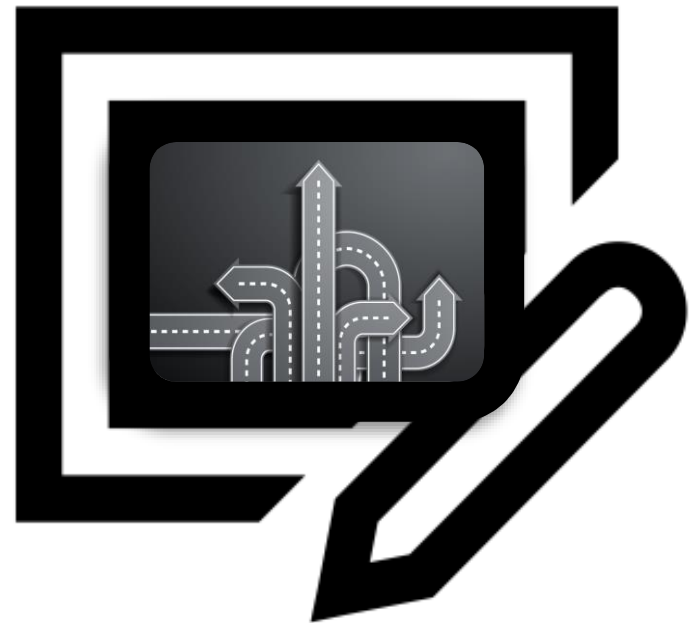
Equity is not a national transportation planning goal,
it's a local priority.



WHY **FRAMING** MATTERS

Why *equity*?

Equitable communities
have stronger
economic growth for
everybody



EQUITY AND ACCESS

Equal access to the benefits of the transportation system is *a critical goal*.



Employment



Food



Education



Health Services



Parks



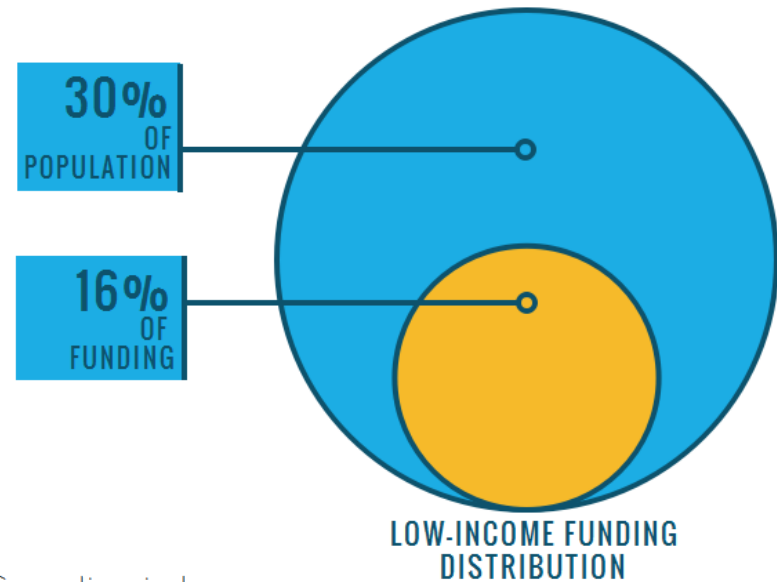
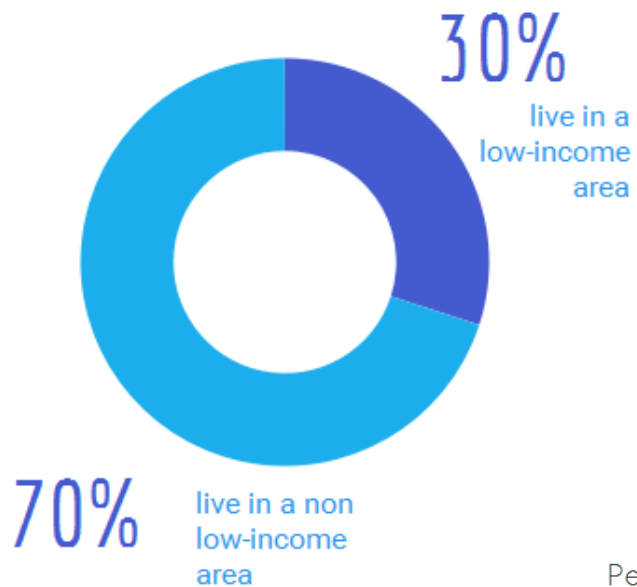
Retail

ENVIRONMENTAL JUSTICE ANALYSIS

in plan2040

LOW-INCOME COMMUNITIES

Funding in plan2040



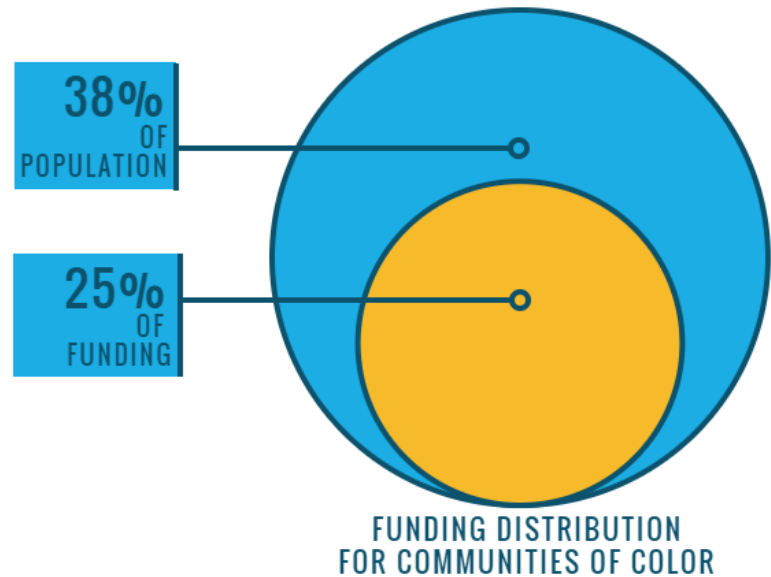
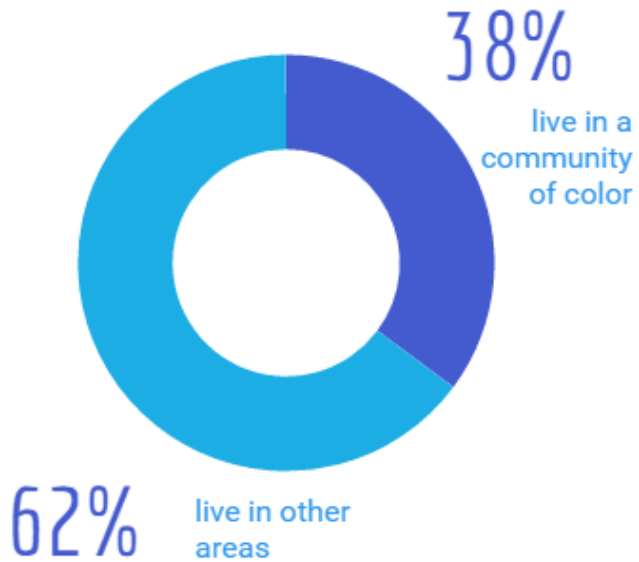
Per Capita Spending in Low-Income Communities



46%

COMMUNITIES OF COLOR

Funding in plan2040



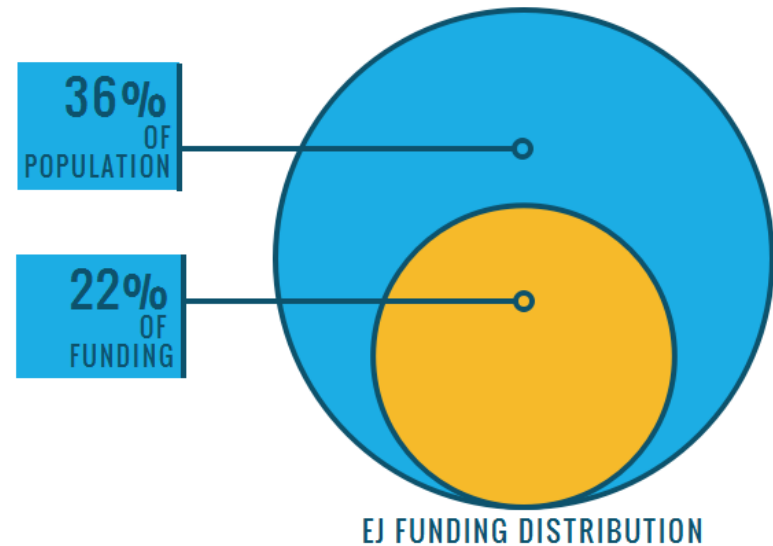
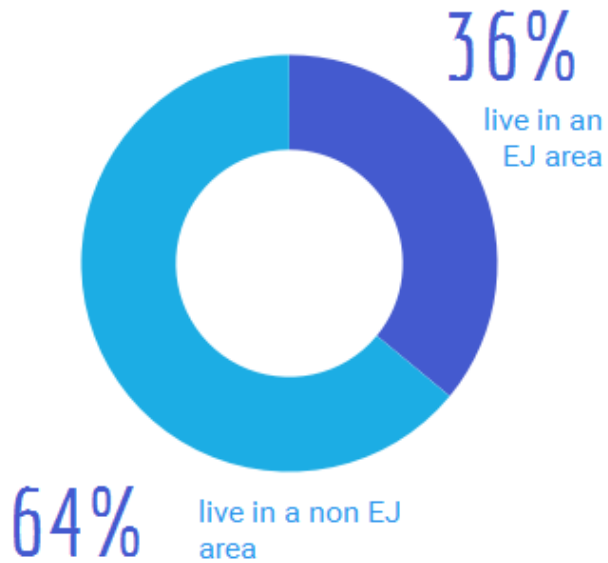
Per Capita Spending in Communities of Color



54%

ENVIRONMENTAL JUSTICE AREAS

Funding in plan2040

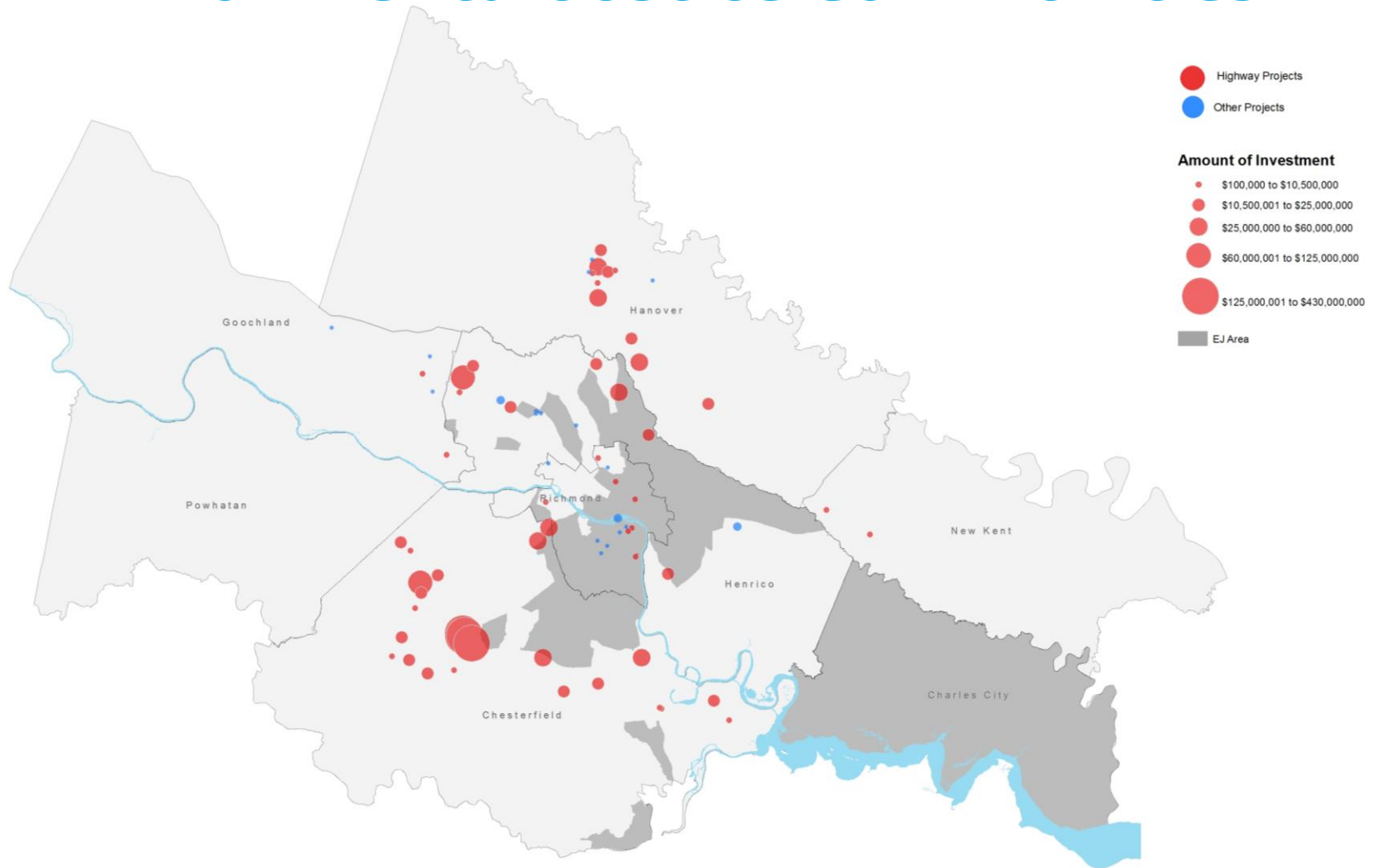


Per Capita Spending in EJ Areas

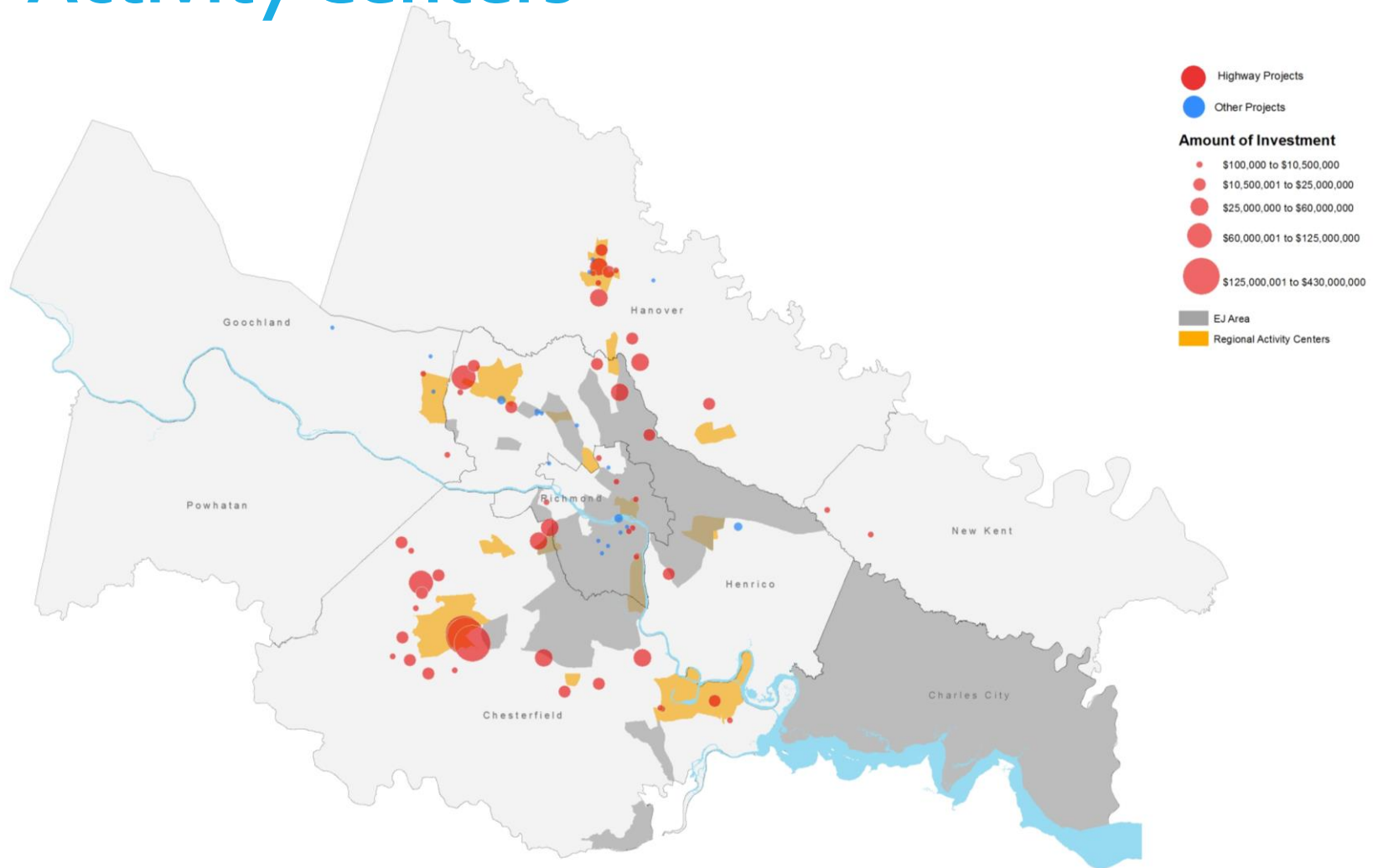


52%

Transportation Investment in Environmental Justice Communities



Transportation Investment in Activity Centers



FIRST STEPS

The Equity Planning Process

RRTPO'S EQUITY PROGRAM

An overview of basic and essential activities for equity planning

A long-term process

