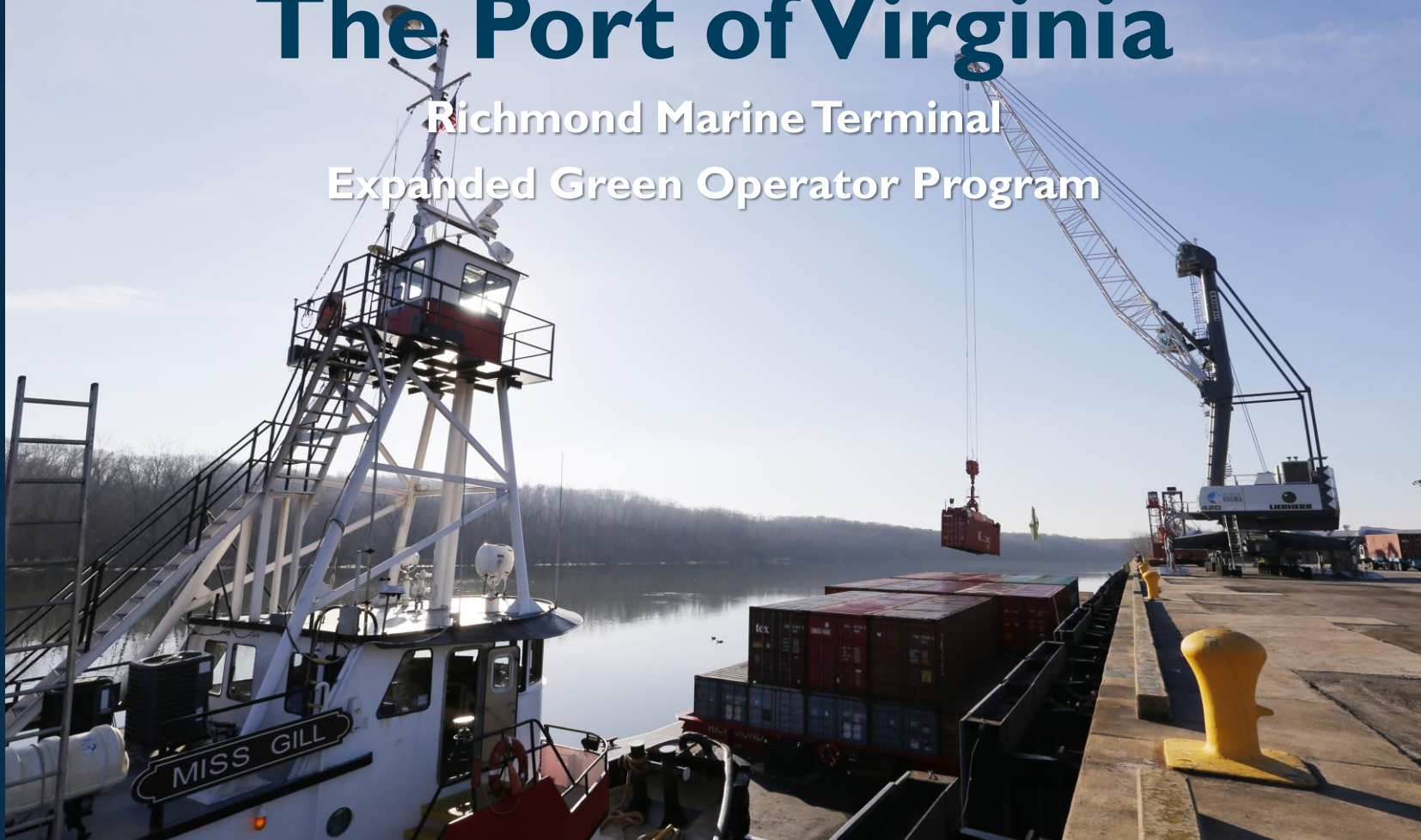


The Port of Virginia

Richmond Marine Terminal Expanded Green Operator Program



1.61
MILLION
CONTAINERS
CY 2017

MORE THAN
\$1 BILLION
INVESTED IN VIRGINIA
BY PORT CUSTOMERS

**WORLD'S
LARGEST**
SINGLE RMG PURCHASE

FIRST EAST COAST CALL
14,000+ TEU
CONTAINER SHIP

MOMENTUM

\$670,000,000
INVESTMENT IN CAPACITY-BUILDING PROJECTS
AT NIT AND VIG UNDERWAY

MORE THAN
4,000
POTENTIAL JOBS CREATED
ACROSS THE COMMONWEALTH

**NUMBER
ONE**
IN EAST COAST
RAIL VOLUME

HOW WE MOVED THE CARGO: CY 2017

1.61 million containers

35.3%



+ 3.4%

% change from CY 2016:

61.6%



+9%

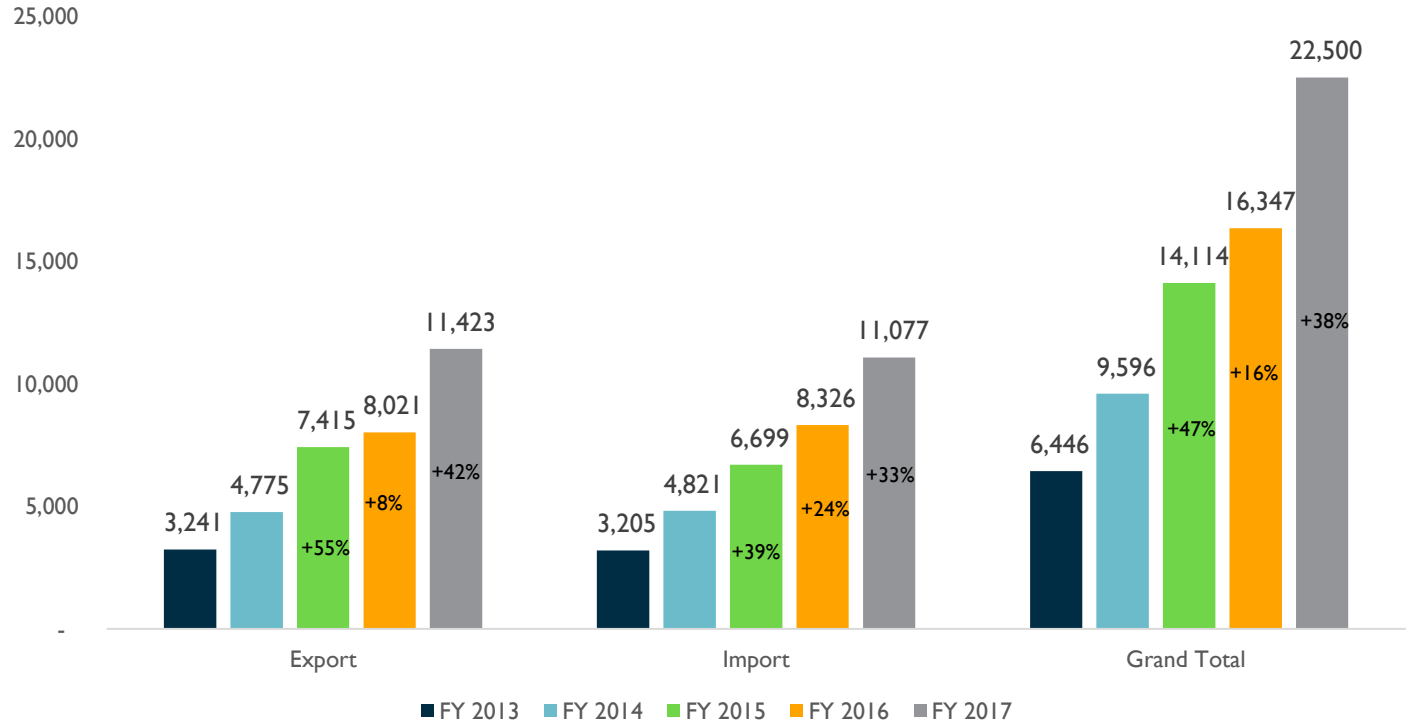
3.0%



+21.6%
RMT: +22.4%

7.2% growth over CY 2016

VOLUME GROWTH AT RMT



MARINE HIGHWAY EMISSION REDUCTION

Annual 2016		Emissions (Tons)					
	Trips	NOx	CO	HC	PM10	SO2	CO2
Truck Service	19,602	25.78	7.20	1.20	1.18	0.05	4,124.72
Barge Service	138	26.04	4.72	1.41	0.75	0.03	2,414.35
Difference		0.26	-2.48	0.21	-0.43	-0.02	-1,710.37
%CHG		1%	-34%	18%	-36%	-35%	-41%

Annual 2017		Emissions (Tons)					
	Trips	NOx	CO	HC	PM10	SO2	CO2
Truck Service	23,994	31.38	8.81	1.47	1.44	0.06	5,048.90
Barge Service	148	27.93	5.06	1.51	0.80	0.03	2,589.31
Difference		-3.45	-3.75	0.04	-0.64	-0.03	-2,459.59
%CHG		-11%	-43%	3%	-44%	-47%	-49%

RICHMOND AREA PORT USERS



NEW OPPORTUNITIES





THANK YOU

An aerial photograph of a port facility. In the foreground, a large barge is docked at a pier, with a tugboat nearby. The pier is equipped with cranes and other port machinery. Behind the pier, there is a large paved area filled with numerous colorful shipping containers (red, blue, yellow, green). To the left, there are several large, long industrial buildings with white, arched roofs. In the background, there are more containers, a parking lot with some vehicles, and a road with a highway interchange. The overall scene depicts a busy port area.